

Residential Lot—.40Acres—\$95,777



**12601 94th Ave N
Maple Grove, MN**

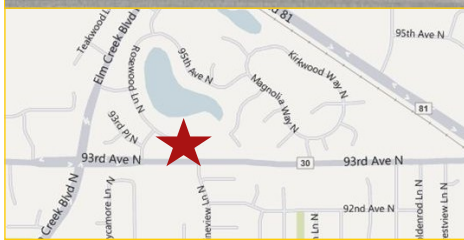
South Teal Crossing

Nearly Half Acre Residential Lot

Located in Maple Grove near and with convenient access to schools, shopping, Maple Grove Hospital and all major Highways. Commute easily to downtown Minneapolis via car or the Maple Grove Transit System.

Nice established development of upper end homes that is open to any builder. There is electric, natural gas, city water, city sewer to the site. Building covenants are available as well.

Bring your own builder with plans and be in your new home by Fall 2011!!



Last Updated: Monday, June 20, 2011

The information herein was obtained from sources deemed to be reliable. The information includes projections, assumptions and estimates as examples only and of a forecast nature yet may not represent actual, current or future performance. We make no guarantees or warranties. It is submitted subject to the possibility of withdrawal without notice, errors, change of price, omissions, financing, rental or other conditions. You and your tax and legal advisors should conduct your own investigation of the property and contemplated or proposed transactions. Copyright 2011 ROCK SOLID Commercial.

Rock Solid
COMMERCIAL

Providing Exceptional Personal Service

www.rocksolidcommercial.com

Delivering Exceptional Positive Results

**ROCK SOLID Companies
is Your FULL SERVICE
Real Estate Brokerage**

Commercial, Property Management,
Troubled Assets, Court Receivership,
Investment/Equity, 1031 Exchange
Residential, Property Development
and Vacation/Coastal Properties.

Licensed in Minnesota & Florida

Contact:

Ron Touchette Broker

612.435.7777

ron@rocksolidcommercial.com

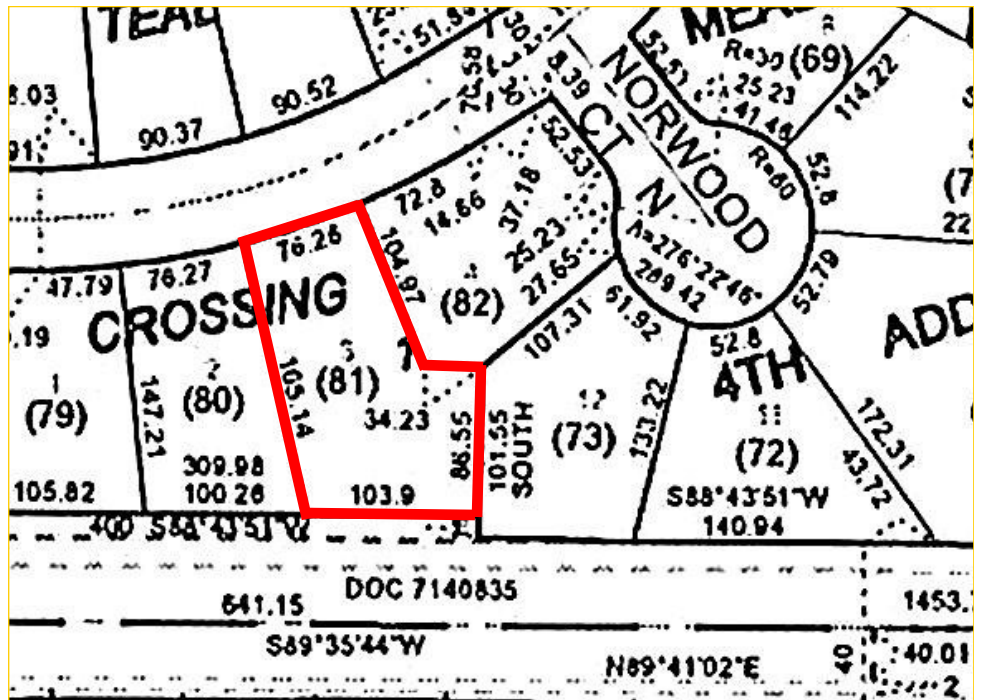
7078 E. Fish Lake Rd., Maple Grove, MN 55311 Main: 612.435.7770 Fax: 612.435.7771

Residential Lot—.40Acres—\$95,777

**12601 94th Ave N
Maple Grove, MN**

Site Data

Listing Price:	\$95,777
Includes:	Land
Location:	12601 94th Avenue N Maple Grove, MN 55369
PID Number:	1111922330081
2010 Total Tax:	\$7,800.32 — includes assessment balance
Assessment Balance:	\$6,638.96
Legal Description:	Lot 003 Block 001 SOUTH TEAL CROSSING
Zoning:	Residential—Single
Topography:	Level
Utilities:	On site
Acres:	0.40
General:	Open to ALL builders! Covenants available.



Rock Solid
COMMERCIAL

Providing Exceptional Personal Service

www.rocksolidcommercial.com

Delivering Exceptional Positive Results

ROCK SOLID Companies
is Your **FULL SERVICE**
Real Estate Brokerage

Commercial, Property Management,
Troubled Assets, Court Receivership,
Investment/Equity, 1031 Exchange
Residential, Property Development
and Vacation/Coastal Properties.

Licensed in Minnesota & Florida

Contact:

Ron Touchette Broker

612.435.7777

ron@rocksolidcommercial.com

7078 E. Fish Lake Rd., Maple Grove, MN 55311 Main: 612.435.7770 Fax: 612.435.7771