

Victory Square South For SALE \$157,777

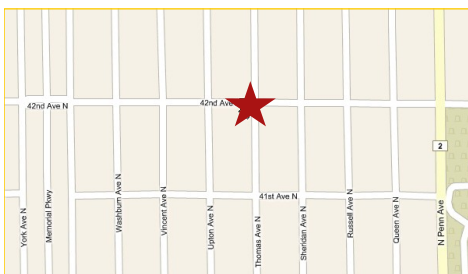


**4149 Thomas Ave N
Minneapolis, MN**

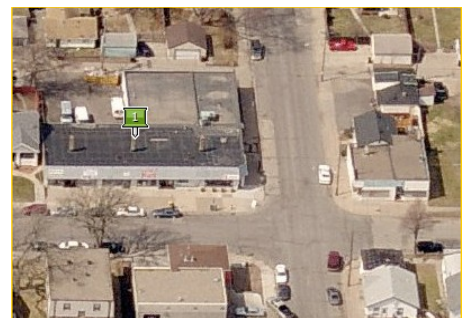
Eight units, Six Store Fronts on Convenient Corner Bus Line

**Excellent investment opportunity on
commercial hub in nice residential neighborhood.**

Nice commercial property located on a busy corner shopping hub in a great family neighborhood. Eight leasable units—including six store fronts—baths, basement, and back parking. Currently home to several thriving businesses including an Italian restaurant, Dry clean drop off & alterations service, and women's fashions. Great location for hardware, Laundromat or hair salon.



- Warm, home style exterior
- 13,466SF plus basement
- Nine leasable units, including basement
- Nearly fully leased with established businesses and family restaurant
- Private off street parking
- Busy corner location



Rock Solid
COMMERCIAL

Providing Exceptional Personal Service

www.rocksolidcommercial.com

Delivering Exceptional Positive Results

**ROCK SOLID Companies
is Your FULL SERVICE
Real Estate Brokerage**

Commercial, Property Management,
Troubled Assets, Court Receivership,
Investment/Equity, 1031 Exchange
Residential, Property Development
and Vacation/Coastal Properties.

Licensed in Minnesota & Florida

Contact:

Ron Touchette Broker

612.435.7777

ron@rocksolidcommercial.com

7078 E. Fish Lake Rd., Maple Grove, MN 55311 Main: 612.435.7770 Fax: 612.435.7771

Victory Square South For SALE \$157,777

Commercial mixed use property with existing tenants and great income potential.

This welcoming property with walk-up store front entrances is ideally located on a busy corner in a great residential area. The building is extremely versatile with existing food service, commercial and warehouse tenants in place. It has 10,000SF plus a basement; and plumbing for a laundromat is already in place. The overall potential of this property is enormous.

**4149 Thomas Ave N
Minneapolis, MN**

Site Data



Listing Price:	\$157,777	
Includes:	Building, land, leases	
Location:	4149 Thomas Ave N, Minneapolis, MN 55412	
PID Number:	0502924130128	
2010 Total Tax:	\$22,222.82	
Legal Description:	Lots 1,2,3 Thorpe Bros Grand Round Blvd, Adhn	
Zoning:	Business/Commercial	
Topography:	Parking lot, sidewalk	
Utilities:	Water	City water, connected
	Sewer	Water—in street City Sewer, connected Sewer—in street
	Electric	Xcel Energy
	Gas	Centerpoint Energy
Number of Buildings:	1	
Number of Units:	Commercial	8
Foundation Size:	10,000SF	
Building Finished SF:	10,000SF	
Lot Size	120 x 126.60	
Building Type:	Brick/stone	
Year Built:	1928	
Parking:	Other	
Occupied:	Yes	
Neighboring:	Commercial and residential	
General:	Lender owned F/C, 10,000SF plus basement. Brick bldg, seven commercial storefronts, busy St. Ideal for neighborhood shopping center—grocery, hardware, video store. Has plumbing for Laundromat. Needs some rehab. 7 baths. Excellent opportunity for investor. SOLD AS IS!	

Rock Solid
COMMERCIAL

Providing Exceptional Personal Service

www.rocksolidcommercial.com

Delivering Exceptional Positive Results

ROCK SOLID Companies
is Your FULL SERVICE
Real Estate Brokerage

Commercial, Property Management,
Troubled Assets, Court Receivership,
Investment/Equity, 1031 Exchange
Residential, Property Development
and Vacation/Coastal Properties.

Licensed in Minnesota & Florida

Contact:

Ron Touchette Broker

612.435.7777

ron@rocksolidcommercial.com

7078 E. Fish Lake Rd., Maple Grove, MN 55311 Main: 612.435.7770 Fax: 612.435.7771

Victory Square South For SALE \$157,777

**4149 Thomas Ave N
Minneapolis, MN**

Demographics

Community-at-a-Glance

County Seat:
Hennepin
Population:
25,010
Median Age:
30.0
Average Family Size:
3.55
Median Single Family
Home Value:
\$80,200
Median Household Income:
\$38,818
Commute Time (minutes):
25.2

General Characteristics	Number	Percentage
Total population	25,010	—
<i>Male</i>	12,056	48.2
<i>Female</i>	12,954	51.8
Median age (years)	30.0	—
<i>Under 5 years</i>	2,124	8.5
<i>18 years and over</i>	16,580	66.3
<i>65 years and over</i>	1,971	7.9
Average household size	2.83	—
Average family size	3.55	—
Total housing units	9,217	—
Social Characteristics	Number	Percentage
Population 25 years and over	14,237	—
<i>HS graduate or higher</i>	11,145	78.3
<i>Bachelor's degree or higher</i>	2,508	17.6
Male, now married	3,424	41.1
Female, now married	3,484	37.1
Economic characteristics	Number	Percentage
In labor force	11,659	67.5
Mean travel time to work (minutes)	25.2	—
Median household income (dollars)	38,818	—
Median family income (dollars)	42,724	—
Per capita income (dollars)	16,250	—
Housing Characteristics	Number	Percentage
Single-family owner-occupied homes	6,294	—
<i>Median value (dollars)</i>	80,200	—
Median of selected monthly owner costs with mortgage (dollars)	800	—

*2000 US Census Data

Rock Solid
COMMERCIAL

Providing Exceptional Personal Service

www.rocksolidcommercial.com

Delivering Exceptional Positive Results

**ROCK SOLID Companies
is Your FULL SERVICE
Real Estate Brokerage**

Commercial, Property Management,
Troubled Assets, Court Receivership,
Investment/Equity, 1031 Exchange
Residential, Property Development
and Vacation/Coastal Properties.

Licensed in Minnesota & Florida

Contact:

Ron Touchette Broker

612.435.7777

ron@rocksolidcommercial.com

7078 E. Fish Lake Rd., Maple Grove, MN 55311 Main: 612.435.7770 Fax: 612.435.7771

Victory Square South For SALE \$157,777

4149 Thomas Ave N
Minneapolis, MN



Rock Solid COMMERCIAL

Providing Exceptional Personal Service

www.rocksolidcommercial.com

Delivering Exceptional Positive Results

ROCK SOLID Companies
is Your FULL SERVICE
Real Estate Brokerage

Commercial, Property Management,
Troubled Assets, Court Receivership,
Investment/Equity, 1031 Exchange
Residential, Property Development
and Vacation/Coastal Properties.

Licensed in Minnesota & Florida

Contact:

Ron Touchette

 Broker

612.435.7777

ron@rocksolidcommercial.com

7078 E. Fish Lake Rd., Maple Grove, MN 55311 Main: 612.435.7770 Fax: 612.435.7771

Victory Square South For SALE \$157,777

**4149 Thomas Ave N
Minneapolis, MN**

Reap the rewards of owning an eight-unit rental property in a busy neighborhood shopping and service corner hub.

Here's your chance to be part of the community action in a great neighborhood. This vibrant, corner location is centrally located and easily accessed on foot or by bus. There is plenty of parking on the street or in the private lot.

- **Seven separate storefronts with private entrances and separate utilities**
- **Current tenants include a pizza & pasta parlor with a charming outdoor seating area, and a custom sewing service**
- **Includes building, land, and leases**
- **Unique features include Laundromat plumbing and overhead**

Leaseholds

Unit #	SF	Availability	Monthly Rent
4149	800	Available	\$ \$11.00 psf + utilities
4151	800	Leased	\$ Gross rent + utilities
4153	800	Leased	\$ Gross rent + utilities
4155	2,726	Available	\$ 11.00 psf + utilities
4157, 4159, 4159B	2,761	Leased	\$ Gross rent + utilities
4161	810	Available	\$ 11.00 psf + utilities
Total Rentable SF	8,697		

The information herein was obtained from sources deemed to be reliable. The information includes projections, assumptions and estimates as examples only and of a forecast nature yet may not represent actual, current or future performance. We make no guarantees or warranties. It is submitted subject to the possibility of withdrawal without notice, errors, change of price, omissions, financing, rental or other conditions. You and your tax and legal advisors should conduct your own investigation of the property and contemplated or proposed transactions. Copyright 2011 ROCK SOLID Commercial.

Last Updated: Friday, June 24, 2011



Rock Solid
COMMERCIAL

Providing Exceptional Personal Service

www.rocksolidcommercial.com

Delivering Exceptional Positive Results

**ROCK SOLID Companies
is Your FULL SERVICE
Real Estate Brokerage**

Commercial, Property Management,
Troubled Assets, Court Receivership,
Investment/Equity, 1031 Exchange
Residential, Property Development
and Vacation/Coastal Properties.

Licensed in Minnesota & Florida

Contact:

Ron Touchette Broker

612.435.7777

ron@rocksolidcommercial.com

7078 E. Fish Lake Rd., Maple Grove, MN 55311 Main: 612.435.7770 Fax: 612.435.7771