

Friendship Addition Lots For SALE \$1,177,777



Cty Rd 39 & Hwy 42
Otsego, MN

4 Lots – 3.44 Total Acres
High Traffic, High Visibility Corner
One Block from Highway 101

Rock Solid
COMMERCIAL

Providing Exceptional Personal Service

www.rocksolidcommercial.com

Delivering Exceptional Positive Results

ROCK SOLID Companies
is Your **FULL SERVICE**
Real Estate Brokerage

Commercial, Property Management,
Troubled Assets, Court Receivership,
Investment/Equity, 1031 Exchange
Residential, Property Development
and Vacation/Coastal Properties.

Licensed in Minnesota & Florida

Contact:

Ron Touchette Broker

612.435.7777

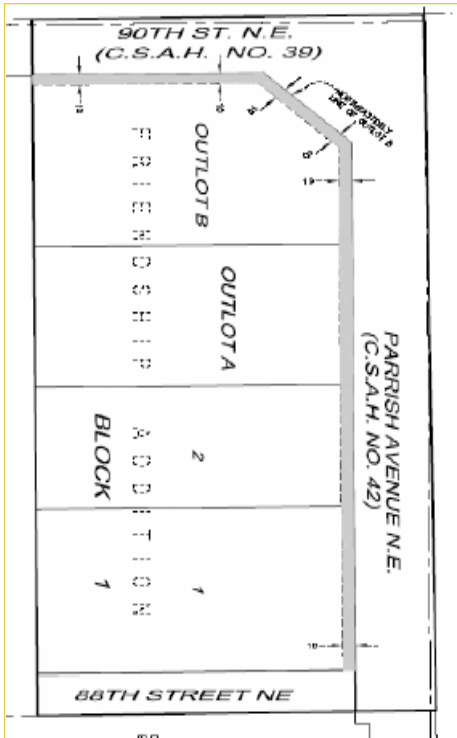
ron@rocksolidcommercial.com

7078 E. Fish Lake Rd., Maple Grove, MN 55311 Main: 612.435.7770 Fax: 612.435.7771

Friendship Addition Lots For SALE \$1,177,777

**Cty Rd 39 & Hwy 42
Otsego, MN**

Site Data



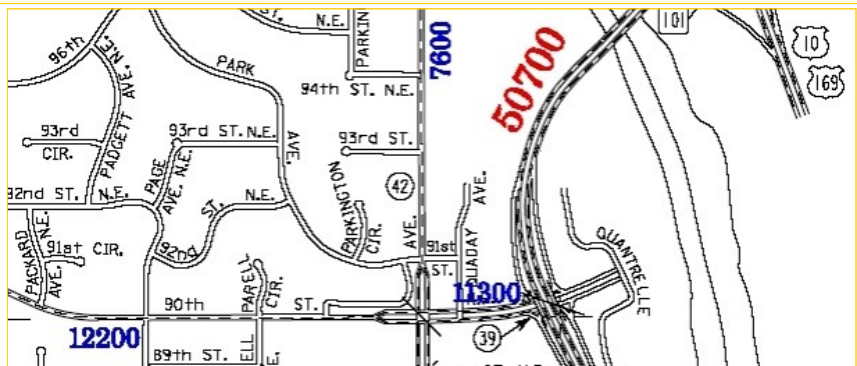
The information herein was obtained from sources deemed to be reliable. The information includes projections, assumptions and estimates as examples only and of a forecast nature yet may not represent actual, current or future performance. We make no guarantees or warranties. It is submitted subject to the possibility of withdrawal without notice, errors, change of price, omissions, financing, rental or other conditions. You and your tax and legal advisors should conduct your own investigation of the property and contemplated or proposed transactions.

Last Updated: Thursday, January 12, 2012

Four adjacent lots on a highly traveled intersection. Perfect for one or more buildings, plus parking!

The corner is a bustling commercial hub one block off Highway 101 and easily accessible from a newly constructed full diamond interchange. Located along the primary gateway to substantial residential commuter communities. Other nearby businesses include: Super Target, a busy fitness center, restaurants, gas stations, banks, professional services and more.

Listing Price:	\$1,177,777
Includes:	Land
Location:	County Road 39 & Highway 42 in Otsego, MN
PID Number:	118257000010; 118257001010; 118257000020; 118257001020
Legal Description:	Friendship Addition
Zoning:	B-3 General Business District
Topography:	level
Utilities:	Water City water Sewer City Sewer Fuel Natural Gas
Number of Buildings:	0
Total SF	149,746 +/-
Acres	3.44 +/-
Neighboring:	Commercial and Residential
General:	Excellent retail / service / office location in an area of growth and opportunity.



Rock Solid
COMMERCIAL

Providing Exceptional Personal Service

www.rocksolidcommercial.com

Delivering Exceptional Positive Results

ROCK SOLID Companies
is Your FULL SERVICE
Real Estate Brokerage

Commercial, Property Management,
Troubled Assets, Court Receivership,
Investment/Equity, 1031 Exchange
Residential, Property Development
and Vacation/Coastal Properties.

Licensed in Minnesota & Florida

Contact:

Ron Touchette Broker

612.435.7777

ron@rocksolidcommercial.com

7078 E. Fish Lake Rd., Maple Grove, MN 55311 Main: 612.435.7770 Fax: 612.435.7771