

FOR SALE

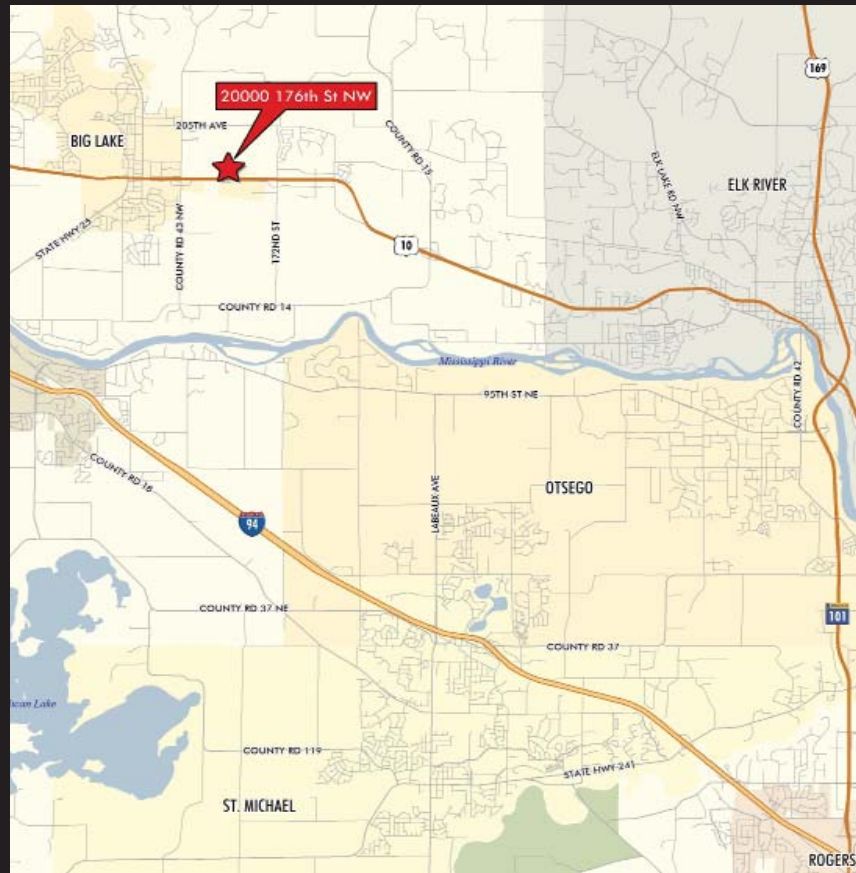
WWW.CBRE.COM/BIGLAKE



20000 176TH STREET NORTHWEST

BIG LAKE, MINNESOTA

- :: 15,820 SF total
 - 7,820 SF office (4,000 SF first floor office, 3,820 SF office second level mezzanine)
 - 8,000 SF warehouse
- :: 3.02 acre lot
- :: 26' clear height
- :: 2 dock doors with levelers; 2 ramped drive-ins
- :: Block construction
- :: 39 parking spaces
- :: ESR Sprinkler
- :: Built in 2001
- :: Sherburne County - PID #65-508-0215
- :: \$975,000 asking price



FOR MORE INFORMATION CONTACT:

Joe Owen

952.924.4647

joseph.owen@cbre.com

James DePietro

952.924.4614

james.depietro@cbre.com

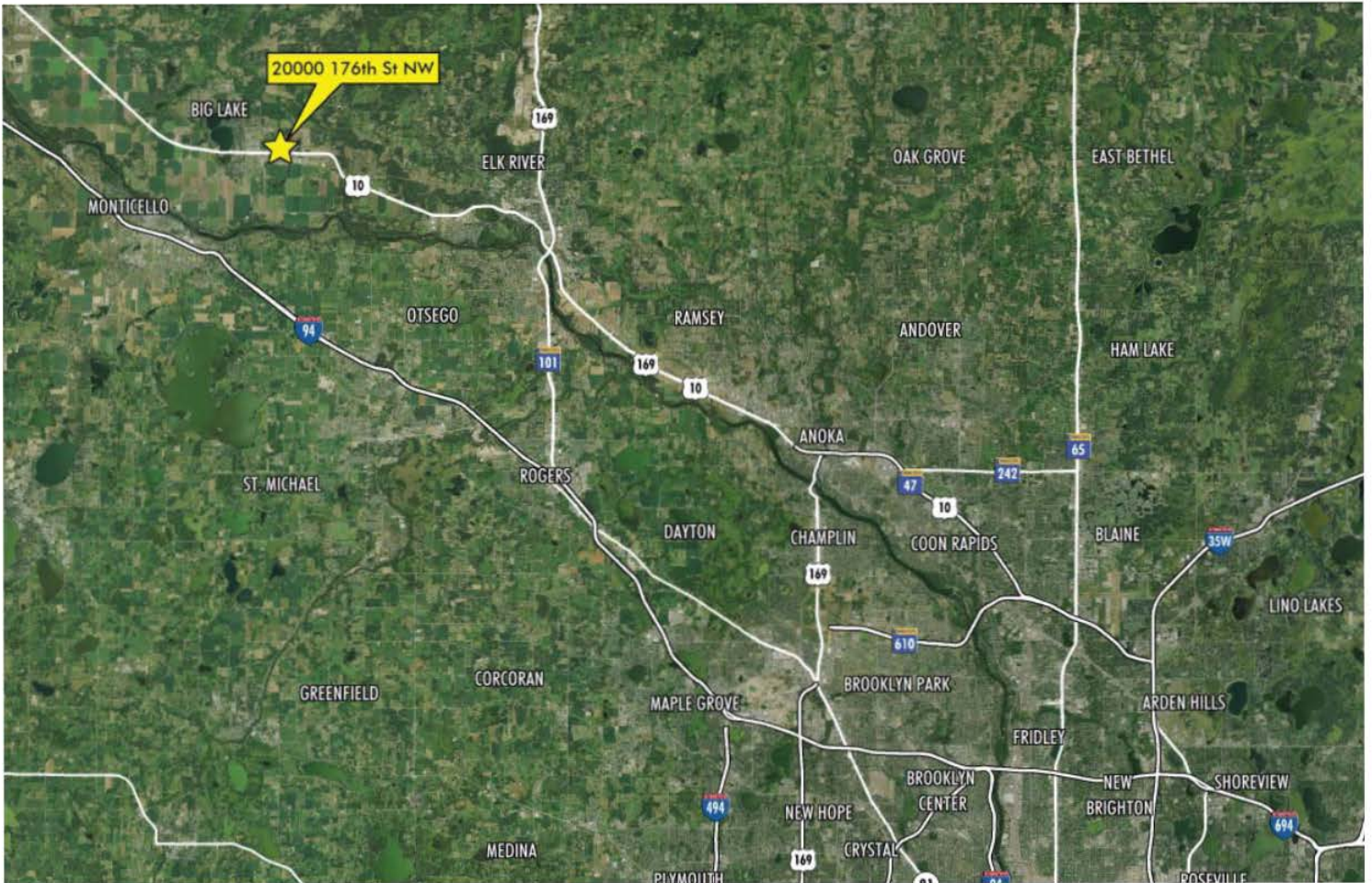
CBRE
CB RICHARD ELLIS

FOR
SALE

20000 176TH STREET NORTHWEST

BIG LAKE, MINNESOTA

www.cbre.com/biglake



FOR MORE
INFORMATION
PLEASE CONTACT

Joe Owen
952.924.4647
joseph.owen@cbre.com

James DePietro
952.924.4614
james.depietro@cbre.com

CB Richard Ellis | 4400 West 78th Street | Suite 200 | Minneapolis, MN 55345 | www.cbre.com/minneapolis



©2011 CB Richard Ellis, Inc. The information above has been obtained from sources believed reliable. While we do not doubt its accuracy, we have not verified it and make no guarantee, warranty or representation about it. It is your responsibility to independently confirm its accuracy and completeness.